



RELIABILITY

EFFICENCY

PERFORMANCE



RANGE **III XFE**

**VACUUM OVENS**

UP TO **200°C** AND **1 MBAR** ABSOLUTE

[www.france-etuves.com](http://www.france-etuves.com)



# VACUUM OVENS XFE<sup>III</sup>

Up to  
**200°C** and

**1 mbar absolute**

XFE vacuum ovens are suitable for applications for drying sensitive products, degassing, heat treatment of materials with a risk of oxidation, etc...



## Multipurpose controller

**C3030 PID electronic controller. Measures by TCJ probe. Temperature stability: 0.2°C. Color screen.**

RS485 interface and numerous functions: 8-segment program, delayed start, repeat loop, real-time program monitoring, offset correction, fault display, integrated vacuum management.

Measurement of current consumption of heating elements and display of a consumption counter on the screen.

## High precision pressure control

**Automatic control of solenoid valves for changing the vacuum level.**

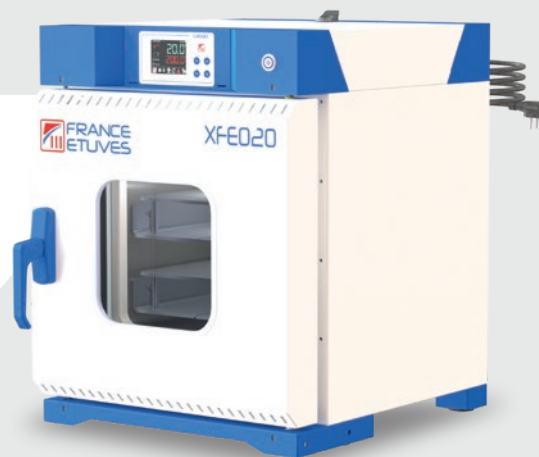
Real-time display of the measurement. Adjustment with offset.

## Modular tray configuration

**Aluminum tray allowing better thermal conduction with the possibility of adding two stackable trays.**

XFE vacuum ovens are supplied with one aluminum tray.

Additional and footed stackable trays can be ordered as accessories.



- Door made up of a thick safety glass mounted on springs to avoid overpressure ;
- Low surface temperatures ;
- Rounded corners ; the trays and the gasket are easily removable for easy cleaning ;
- Exterior in electro-galvanized steel in white and blue epoxy paint ;
- Corrosion-resistant 304 stainless steel inner tank.

## OPTIONS



### Ethernet/RS485 converter

Add an Ethernet port to communicate in modbus TCP with temperature controller.



### Ethernet/RJ45 communication module

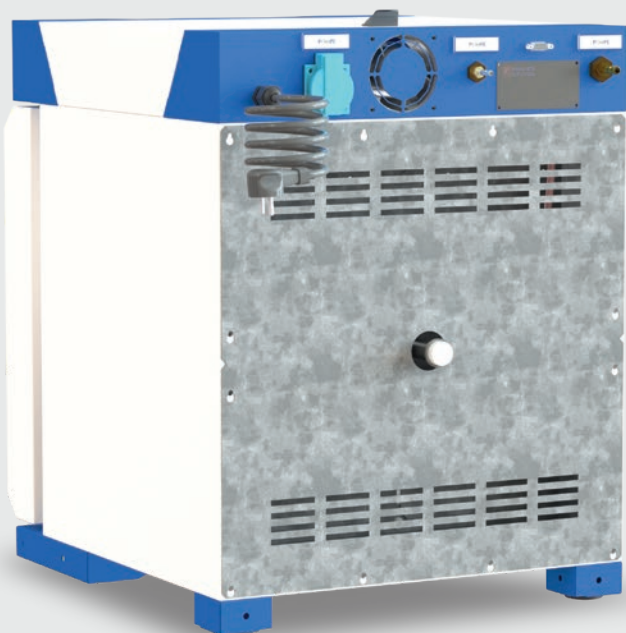
The user can monitor the controller with a web application included into the module.  
The module can also send data to a cloud.



### Calibration and homogeneity certificate

Contact us to define the modalities of execution.

## ROBUST CONSTRUCTION OPTIMAL PERFORMANCES



## Simple connection of your vacuum pump

Quick access nipples allow air pumping and vacuum breaking.

## Protections for your oven and your products

XFE ovens are equipped with an electronic thermostat with 2 modes (TWW or TWB) according to the DIN 12 880 standard.  
Temperature monitoring via Setpoint Deviation Tracking (SDT) and guaranteed soak band.  
Automatic heating shutdown when the door is open.

## Easy metrology setup

A DN16 KF feedthrough allows the insertion of probes with an optional adaptor.

## Efficient heating by IR radiations

The heating elements are installed around the tank for excellent temperature distribution.

# ACCESSORIES



1

Footed stackable tray



2

Conductive aluminum tray



3

Oil bath pump



4

Dry pump



5

Data logger with 2 channels



6

4-way portable recorder with graphical screen



7

Thermocouple J probe



8

Subframe with castors



9

Subframe with feet



10

Adaptor for 2 or 4 probes



11

Wifi communication module

1

## Footed stackable tray

Footed tray to be placed on the conductive aluminum tray. Maximum load of 10kg.

2

## Conductive aluminum tray

Conductive aluminum tray (load 20 kg), can support one or two footed trays.

3

## Oil bath pump

Pumping system with 1m hose and oil mist separator. Not suitable for processes where water vapor can be drawn into the pump.

4

## Dry pump

Diaphragm pump with 1m hose. Minimum pressure  $\geq 10$  mbar. Suitable for processes where water vapor would be drawn into the pump.

5

## Data logger with 2 channels

Allows recording of temperatures measured by 1 or 2 probes (software provided).

6

## Portable recorder with graphical screen

Accept up to 4 temperature probes (probes not supplied). Large graphic screen to monitor temperature changes in real time. Data can be retrieved via USB or RJ45 port.

7

## Thermocouple J probe

Stainless steel sheathed. Length of 2m. With connector and pierced silicone plug.

8

## Subframe with castors

To raise the oven for better loading comfort and make it easier to move. Safety window at the front. Clever storage of the vacuum pump inside.

9

## Subframe with feet

To raise the oven for better loading comfort. Safety window at the front. Clever storage of the vacuum pump inside.

10

## Airtight adaptor for 2 or 4 probes

To be placed on the DN16 KF flange to introduce up to 4 probes inside the oven (not included).

11

## Wifi communication module

Allows monitoring of the C3030 controller by a web app included into the module.

Add a SD card inside the module to keep an history by day and by programmed curing number. The module also allows data to be sent to a cloud.



3 volumes

20 liters

50 liters

120 liters

XFE020

XFE050

XFE120



# TECHNICAL DATA



	XFE020	XFE050	XFE120
Working volume (L)	20	51	110
SIZES			
Internal width (mm)	250	320	470
Internal depth (mm)	320	500	500
Internal height (mm)	250	320	470
External width* (mm)	480	550	812
External depth* (mm)	636	816	882
External height* (mm)	628	698	908
Floor height with subframe option (mm)	950	950	950
Weight, empty (kg)	60	85	205
PERFORMANCES			
Temperature range (°C)	Ambient temperature + 20°C up to 200°C		
Controller temperature fluctuation (+/- °C)	< 0.2°C		
Pressure range (mbar)	from 1 mbar up to atmospheric pressure (absolute)		
Gauge type	Piezo		
CONNECTION			
Pumping fitting	barbed adapter for hose Ø7		
Vacuum breaking connection	barbed adapter for hose Ø4		
ELECTRICAL DATA			
Heating power (W)	800	1200	2400
Electrical supply	230V ~1P 50/60Hz		
Amperage connection(A)	16	16	16
LOADING TRAYS			
Number of trays provided / max. in the oven	1 / 2	1 / 2	1 / 4
Useful dimensions of the tray (WxD) (mm)	240x280	310x460	460x460
Useful dimensions of the stackable tray (WxD) (mm)	225x280	295x460	445x460
Maximun load on a shelf / in the oven (kg)	20 / 60	20 / 80	20 / 120

\* Some options may change the oven sizes



Internet, mobile phone, tablet

**Order easily online**

**RECEIVE YOUR PRODUCTS QUICKLY**

[www.france-etuves.com](http://www.france-etuves.com)



**FRANCE ETUVES**

Ovens designer and manufacturer

**+33 1 64 21 30 60**

**65/67 rue Auguste Meunier  
77500 Chelles, FRANCE**