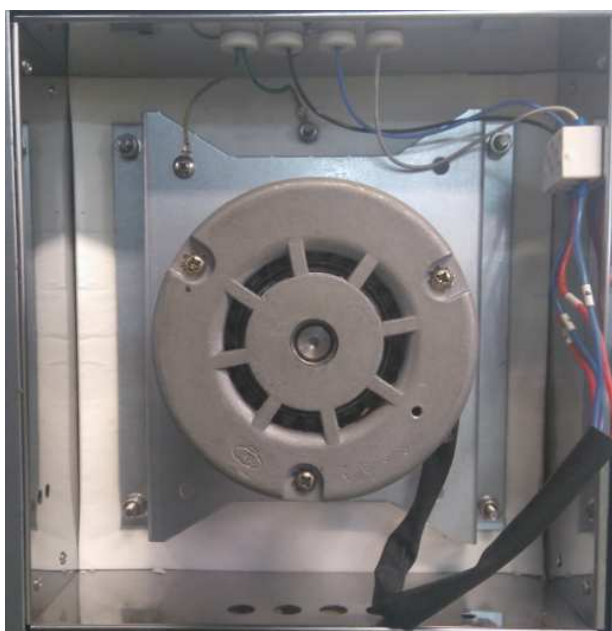


REPLACEMENT PROCEDURE 0032-EN

440273 Moteur 220V 0.7A 50-60Hz 2850-3350RPM



Concerned ovens: XU343 to XU980

Created : 24-04-2017 par OC

Replacement procedure 0032-EN: 440273

**Before any replacement operation, disconnect the oven from the electric network.
Any replacement operation must be made at ambient temperature by a trained, authorized and competent staff.**

**The staff in charge of the replacement must wear fitted Personal Protective Equipment.
Use only components recommended by the FRANCE ETUVES company.**

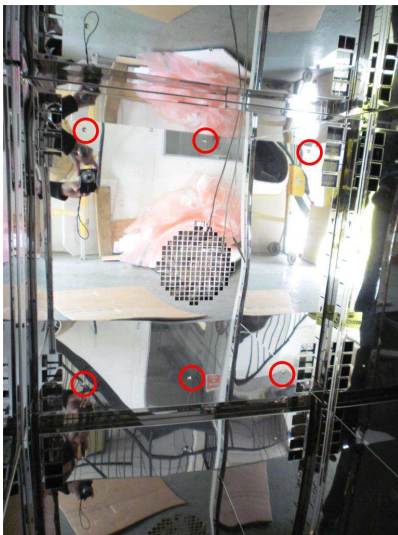
1. Defective fan disassembly

1.1. Inside the oven, lift the hook with a flat screwdriver and free the PT100 probe and the thermostat.

If the bottom fan of the XU686 or XU980 is in question, skip this step.

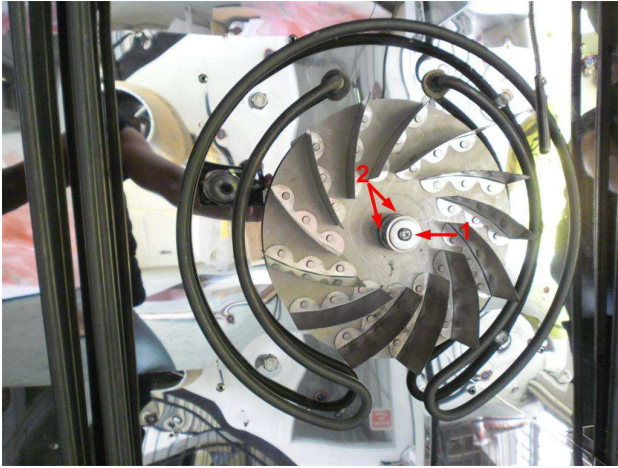


1.2. Remove the 6 screws in order to remove the back ventilation sheet.



Now you have access to the impeller.

1.3. Remove the screw (1) with a cross point screwdriver and release the 2 lateral little screws (2) with a 3 Allen key to remove the impeller.



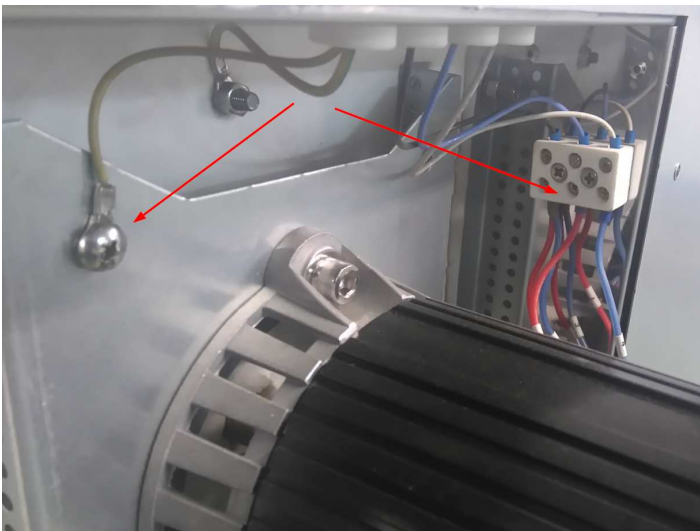
1.4. At the rear of the oven, unscrew the protective cover (12 screws).



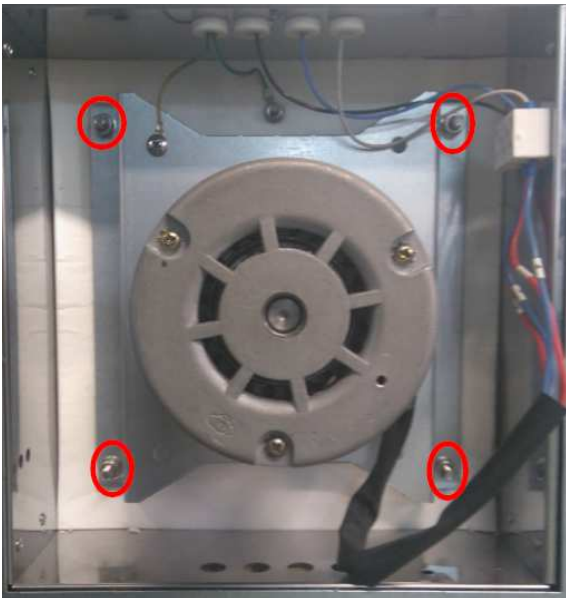
Now you have access to the fan.

1.5. Memorize the wiring order and disconnect the fan.

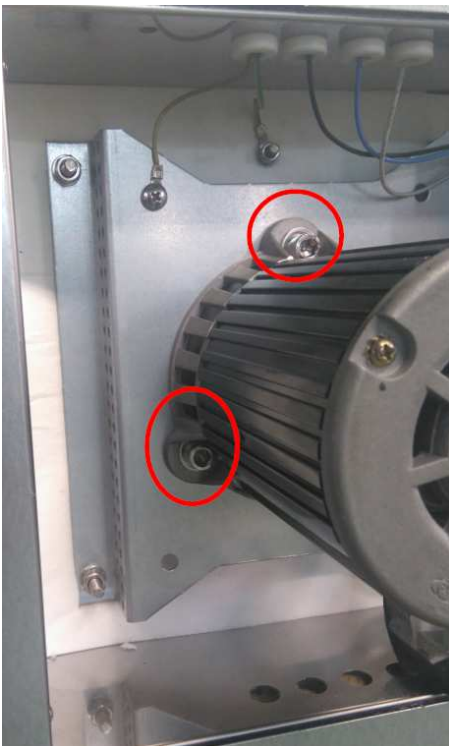
Power supply and ground



1.6. Remove the fan with its support by unscrewing the screws indicated on the following picture.



then unfasten the new motor from its support by unscrewing the indicated screws on the image below.



2. New fan assembly

2.1. Put in place the new fan at its final position by inserting the drive shaft into the hole (with or without support, see the step 1.6. of the disassembly procedure) and fix it with the nuts.

2.2. Connect the new fan correctly.

2.3. Screw the protective cover.

2.4. Inside the oven, put in place the impeller, then screw the middle screw and tighten the 2 lateral little screws.

2.5. Put in place the ventilation sheet with the 6 screws.

2.6. Inside the oven, place the probes with the hook. Press the hook so that the probes cannot free.

Important: The ends of the probes must be placed in front of the top part of the aspiration grid.